

New Bundaberg Hospital

PROJECT DELIVERY UPDATE | MARCH 2024



Artist impression

In June 2022, the Queensland Government announced and committed \$1.2 billion to build the new Bundaberg Hospital, to serve our growing and ageing community and help you get more of the care you need closer to home.

Hospital project moves towards construction

The new Bundaberg Hospital project has entered the next design phase, with the first round of detailed design workshops with staff and consumers occurring earlier this month.

Last year’s design activities focussed on the positioning of rooms within each of the hospital departments, ensuring seamless patient and staff flow and

understanding the movements around consumables and waste.

The project team now turns its attention to detailed design, delving into greater detail looking at the ‘nuts and bolts’ of the design by examining individual room layouts – from developing a complete list of technology, furniture, fixtures, and equipment all the way down to determining the location of power point locations in individual rooms.

We’ve over 100 local doctors, nurses, allied health and support staff, along with several valued consumers and community members, working in partnership with the architects as we enter the pointy end of the design process.

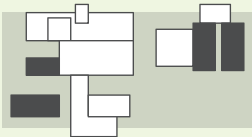
We’re also considering all of the feedback we’ve received from the broader workforce and community during the years as part of this process.

WE ARE HERE



MASTER PLAN

What are the opportunities for locating health and other complementary facilities on the site?

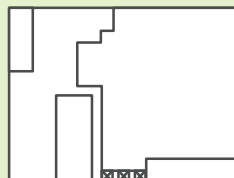


PLANNING



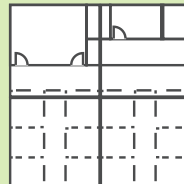
CONCEPT DESIGN

Where is each service located in relation to other services in the hospital?



SCHEMATIC DESIGN

What is the internal layout of each service?



DESIGN



DETAILED DESIGN

What is the design of each room and space within each service?



INSIDE THIS UPDATE

- Detailed design underway
- Consumers help shape design
- Staff test-fit patient bedroom

▶ Hear from emergency department staff specialist **Dr Olima**, paediatrician **Dr Wakeley**, nurse unit manager **Sue** and one of our consumer representatives, **Jan**, as they share their thoughts on why it’s so important to involve local users in the design process.



Ruth shares her consumer and carer experiences to help shape design



Engaging with all types of users provides valuable insight so that the best patient outcomes can be achieved, which is why we're involving consumers such as Ruth in our design workshops.

"A few years ago, I spent many months at the Queensland Children's Hospital as my child received treatment for advanced cancer and related conditions that almost took his life," Ruth said.

"Since then, I've been passionate about helping others who find themselves in similar circumstances.

"When I saw an advertisement to be involved as a 'consumer voice' in planning activities for the new hospital, I was keen to help.

"As the Bundaberg Childhood Cancer Support Family Ambassador, offering support

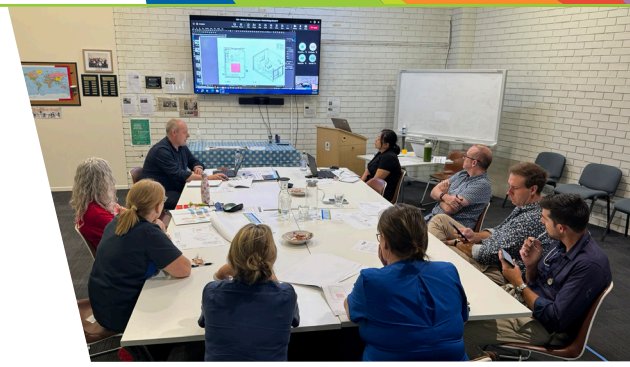
to local families, I also have a vantage point of being able to offer feedback from a range of local voices.

"Each stakeholder in the design process has a specific expertise – the architects, builders, the clinical and support staff, and of course, the patients, the consumers of the health services.

"Contributing 'consumer voices' offers a more holistic outcome, with a hospital purposefully designed with not just the delivery of healthcare in mind, but also patient safety and comfort."

Ruth is the 'consumer voice' for our children's ward and adolescent unit, and has attended multiple design workshops since last year.

"As a parent who has spent a lot of time in hospital with my child, I've witnessed the complexities in being able to deliver the best care to each patient while trying to preserve their privacy and comfort," she said.



Above: Children's ward user group meets with architects.

"I've been able to draw upon my own, and others' experiences within hospitals to express some of the challenges we faced and contribute ideas that have helped shape the design of the children's ward and adolescent unit.

"The team has taken on board design suggestions on how patients and carers can best interact with staff, and how they may easily interact with services delivered on the ward.

"Participating in the design process has been an enormous privilege – it's been informative, enjoyable, and a way to meet others who are also invested in our local community."

Local staff test mock-up of new patient bed room

The new hospital will have a combination of single and double rooms to enhance patient, comfort, privacy and healing.



Traditionally, patient beds within double rooms have been positioned side-by-side.

One of the key features of your new hospital's double rooms is the use of a toe-to-toe layout, offering patients with an equal level of privacy, an outdoor view and natural light.

Recognising that the existing hospital does not have a double room with this arrangement, the project team recently created a

mock-up for local staff to run a variety of scenario-based testing to identify the functionality and safety of the physical space.

Clinical scenarios included 'Code Blue' (medical emergency) patient transfers, use of mobile equipment, and multidisciplinary ward rounds.

All feedback gathered during these sessions is being used to inform the design of these rooms.

Left: Local WBHHS workplace, health and safety staff review mock-up

For more information about the project and to sign up to get the latest news, announcements and project updates delivered straight to your inbox, visit www.widebay.health.qld.gov.au/new-bundaberg-hospital.

Phone: 07 4303 8540 Email: wbhhs-newhospital@health.qld.gov.au

Wide Bay
Hospital and
Health Service



www.health.qld.gov.au/widebay