

Environmental Sustainability Strategy 2024 – 2026



Smaller footprint, bigger strides: Our green healthcare journey

Our strategy

We will target five strategic areas, each supported by aspirational but achievable action plans.

Our pledge

We will reduce our environmental impact while maintaining our commitment to high-quality health care, for the community of today and the generations of tomorrow.

Introduction

Wide Bay Hospital and Health Service’s values of Collaboration, Accountability, Respect and Excellence Through Patients’ Eyes underpin everything we do, and extend beyond the walls of our facilities.

As the biggest employer in our region, we are conscious of the significant responsibility we have to reduce our carbon footprint and change the way we operate to deliver a more environmentally sustainable service that meets our community’s expectations.

As our energy- and waste-intensive healthcare sector contributes to the causes of climate change, and climate change impacts pose an increasing risk to population health and healthcare demand, there has never been a more urgent time to act.

This sustainability strategy represents just the first steps on our pathway to a greener, healthier future. It requires the support and action of our entire workforce, from our teams on the floor to our organisational leaders and decision makers.

There is much to do. We invite all of you to join us on this important journey.

Debbie Carroll
Chief Executive

Peta Jamieson
Board Chair



Queensland Government targets

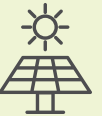
Energy and emissions

2030: 50% renewable energy;
30% emissions reduction (below 2005 levels)



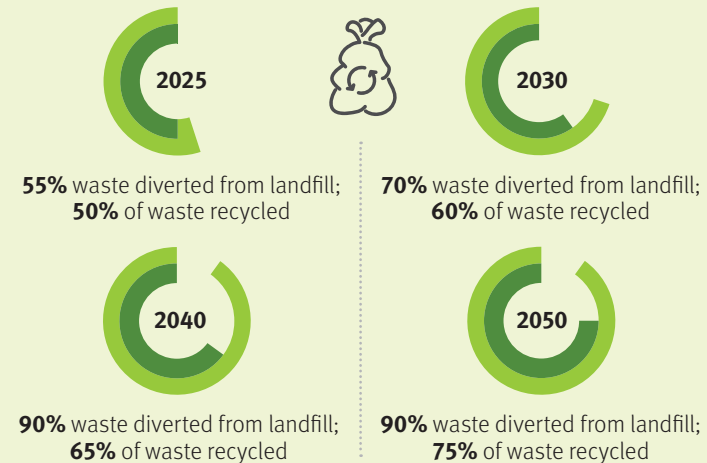
2032: 70% renewable energy

2035: 80% renewable energy;
75% emissions reduction (below 2005 levels)



2050: Zero net emissions

Waste



Our strategic areas



1

Green facilities

Build and maintain all facilities, plant and infrastructure to integrate environmental sustainability and resilience

- Adopt a life-cycle approach to assets, including design, construction, maintenance and redevelopment
- Enhance the climate resilience of existing infrastructure through future-focused asset management planning
- Optimise natural resources and accessibility to enhance comfort for staff and patients



2

Green initiatives

Reduce emissions and waste, improve energy efficiency and drive continuous sustainable change

- Identify, investigate and implement green initiatives, with an emphasis on key focus areas and replication across sites
- Drive sustainable change that supports Queensland Government climate and waste targets
- Review governance and processes to improve decision-making and accountability

Key focus areas:

- Waste
- Energy
- Procurement and purchasing



3

Green monitoring

Measure, monitor and report on key sustainability metrics to track progress and identify opportunities for improvement

- Develop data monitoring systems to establish a baseline, monitor progress and inform reporting
- Identify major sources of waste and energy use, and work with relevant stakeholders to improve
- Set aspirational but achievable goals that align with Queensland Government targets



4

Green workforce

Create a sustainability-driven culture through strong leadership and an empowered workforce

- Promote environmental sustainability as an organisational priority
- Educate, energise and empower staff to play a role in evidence-based initiatives
- Create a grassroots Green Team to provide input and be change champions



5

Green governance and planning

Foster innovation, mitigate risk and maintain quality care

- Integrate sustainability into all strategy, governance, decision-making and planning activity
- Promote achievements through regular communications, recognition programs and showcase events
- Forge strategic collaborations with partners including government, external healthcare providers, universities and peak bodies

