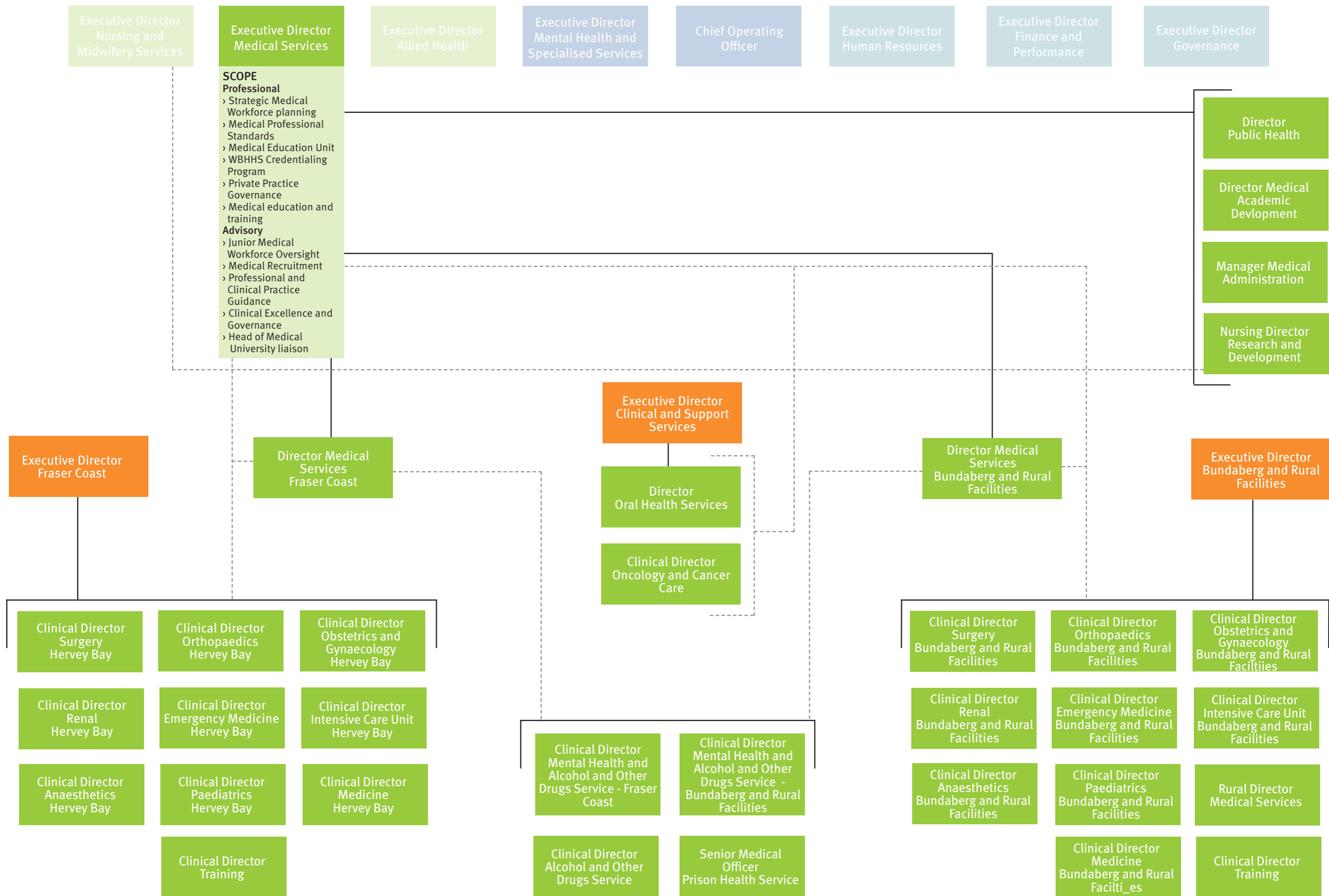
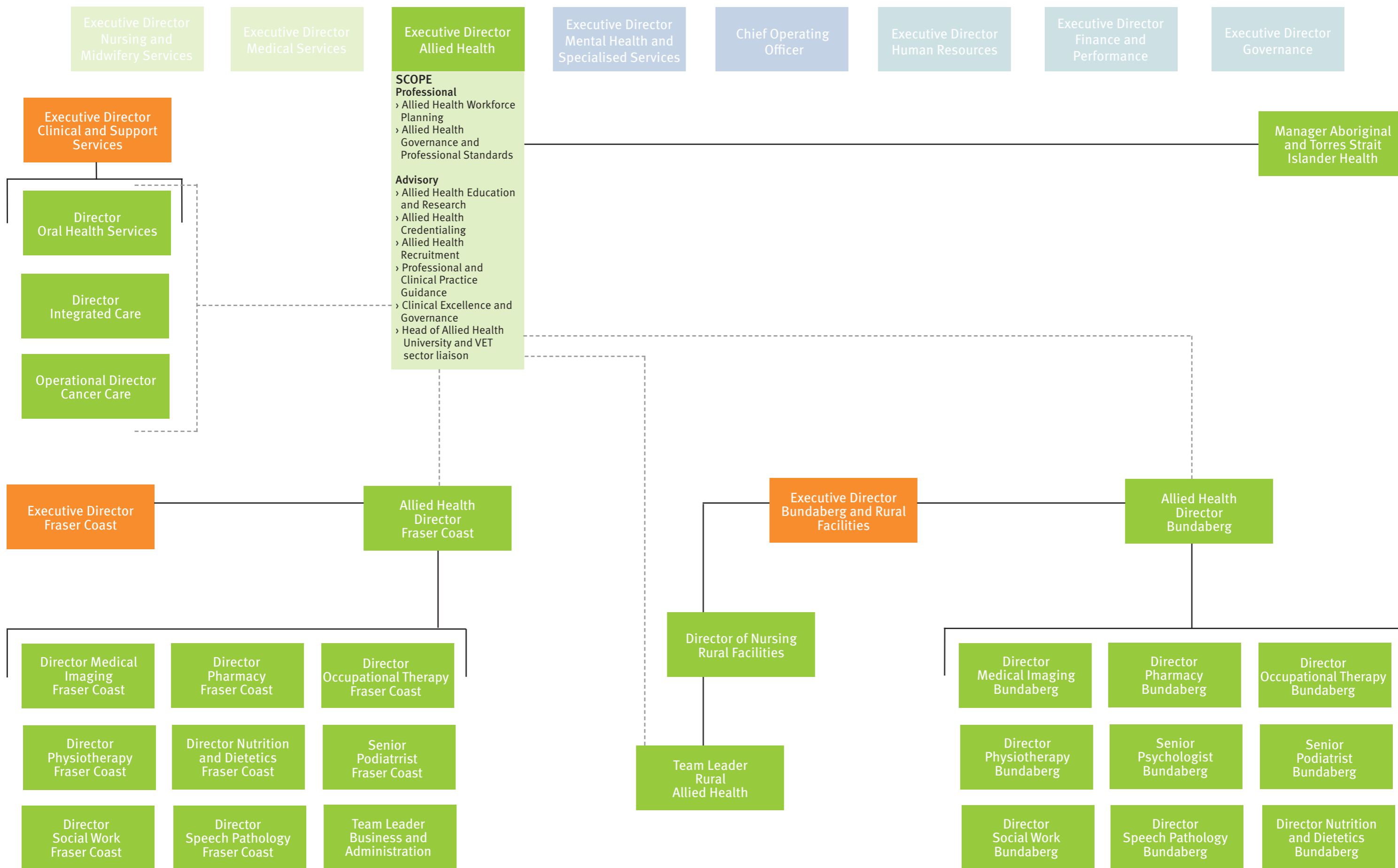


***Note**

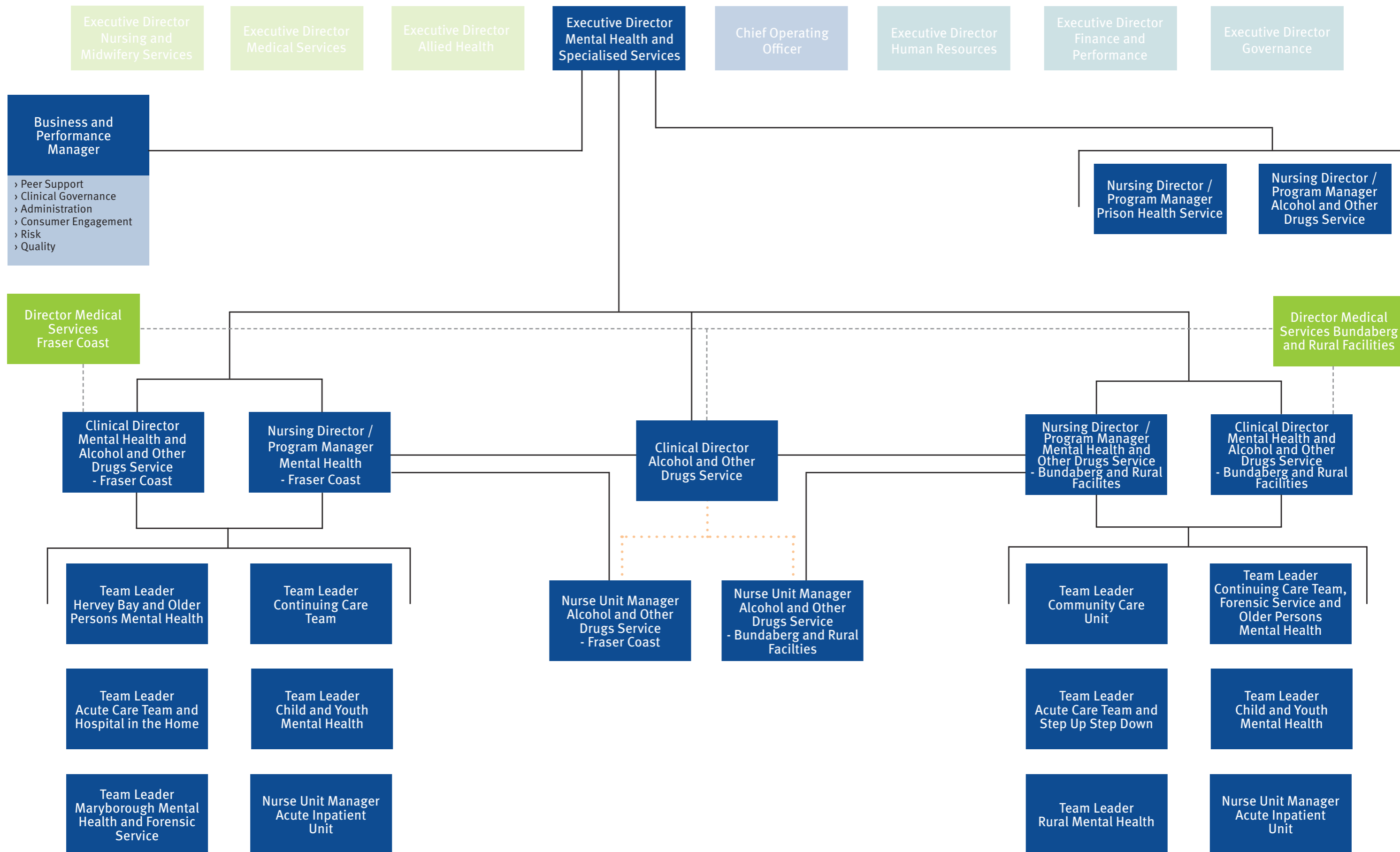
Staff within the Nursing and Midwifery stream work across Wide Bay Hospital and Health Service in various roles and positions. The Executive Director Nursing and Midwifery Services provides professional support to staff within the Nursing and Midwifery stream, regardless of their operational reporting line.



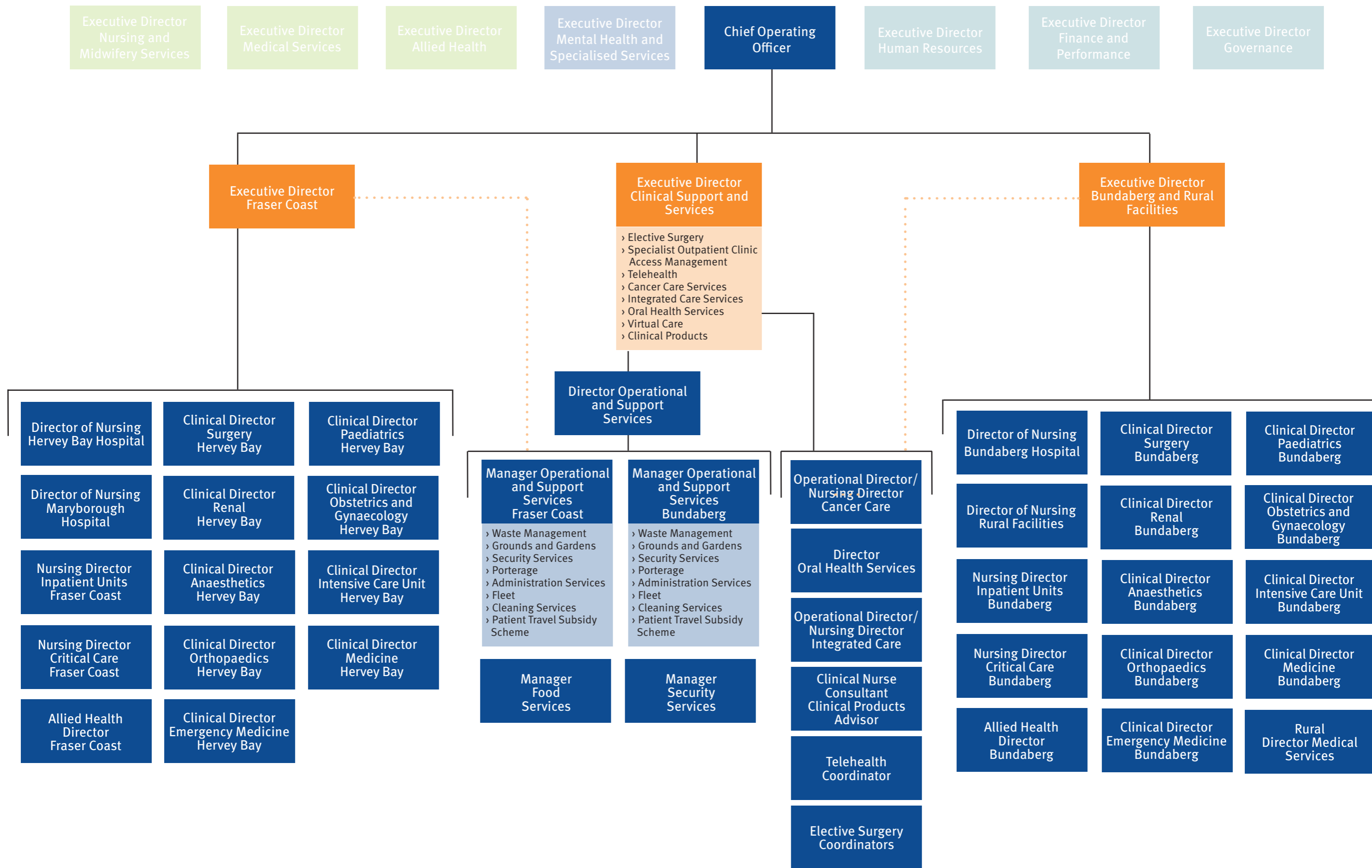


***Note**

Staff within the Allied Health stream work across Wide Bay Hospital and Health Service in various roles and positions. The Executive Director Allied Health provides professional support to Allied Health staff, regardless of their operational reporting line.



***Note**
 Mental Health and Specialised Services is a multidisciplinary stream. As such, the positions of Nursing Director / Program Manager Mental Health and Alcohol and Other Drugs Service, both North and South, and the Nursing Director / Program Manager Alcohol and Other Drugs Service position can be flexibly filled by individuals from either the Nursing or Allied Health disciplines. These positions would then report professionally to the appropriate Executive - either the Executive Director Nursing and Midwifery Services or the Executive Director Allied Health.
 The Nurse Unit Manager Alcohol and Other Drugs Service (North or South) positions are line managed by the respective Nursing Director/Program Manager Mental Health (North or South), and also have an operational relationship with the Clinical Director Alcohol and Other Drugs Service.



***Note**

The positions of Director Integrated Care and Operational Director Cancer Care can be flexibly filled by individuals from either the Nursing or Allied Health disciplines. These positions would then report professionally to the appropriate Executive - either the Executive Director Nursing and Midwifery Services or the Executive Director Allied Health.

The Manager Operational and Support Services positions are line managed by the Director Operational and Support Services, and also have an operational relationship with the Executive Director Facilities positions.



Executive Director
Nursing and
Midwifery Services

Executive Director
Medical Services

Executive Director
Allied Health

Executive Director
Mental Health and
Specialised Services

Chief Operating
Officer

Executive Director
Human Resources

Executive Director
Finance and
Performance

Executive Director
Governance

Director Employment
Relations,
Recruitment and
Workforce Services

- › Recruitment and Workforce Services
- › Employment Relations
- › Industrial Relations

Principal Lawyer
Industrial Relations /
Employment Relations

Director
Occupational Health
and Safety

- › Workplace Safety and Wellbeing
- › Rehabilitation and Return to Work
- › Fire Safety

Director
Organisational
Development and
Training

- › Learning Management System
- › Training and Development



Executive Director
Nursing and
Midwifery Services

Executive Director
Medical Services

Executive Director
Allied Health

Executive Director
Mental Health and
Specialised Services

Chief Operating
Officer

Executive Director
Human Resources

Executive Director
Finance and
Performance

Executive Director
Governance

Director Financial
Accounting

- › Revenue
- › Financial Accounting and Compliance

Director Management
Accounting

Director Information
Services and
Performance
Analytics

- › Information,
Communication and
Technology

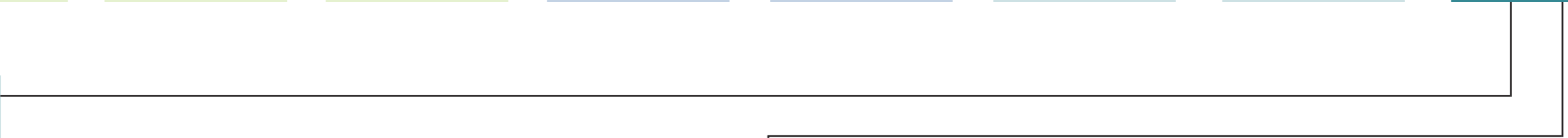
Director Contracts
and Commercial
Management

- › Strategic Procurement

Director Funding and
Performance



- › Strategic and Health Service planning
- › Ministerial and Departmental correspondence/liaison
- › Executive Governance



Director Clinical Governance

- › Independent Patient Rights Advisor
- › Consumer Feedback
- › Clinical Incident Management
- › Clinical Audit
- › Open Disclosure
- › Policy and Procedure
- › Quality Standards and Accreditation

Director Media and Communications

- › Media
- › Digital Communications
- › Graphic Design

Manager Consumer and Community Engagement

- › Community Engagement
- › Volunteer Services
- › Patient Experience
- › Spiritual Care

Director Service Transformation and Redesign

- › Service Redesign
- › Sustainability Projects
- › Project Management

Director Board Governance

- › Board Services
- › Office of the Health Statutory Authority

Manager Risk and Compliance

- › Risk Management
- › Compliance
- › Internal Audit