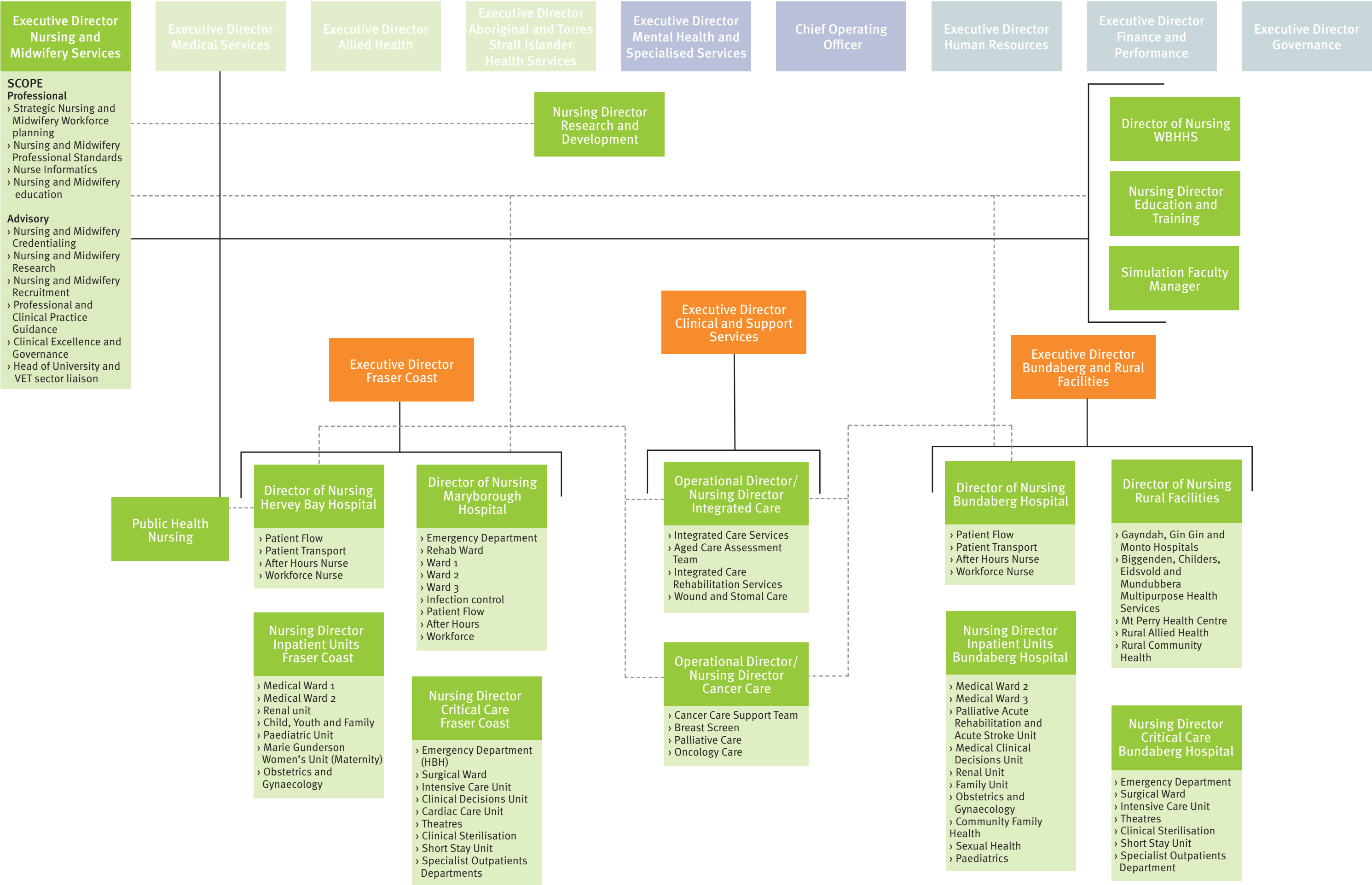


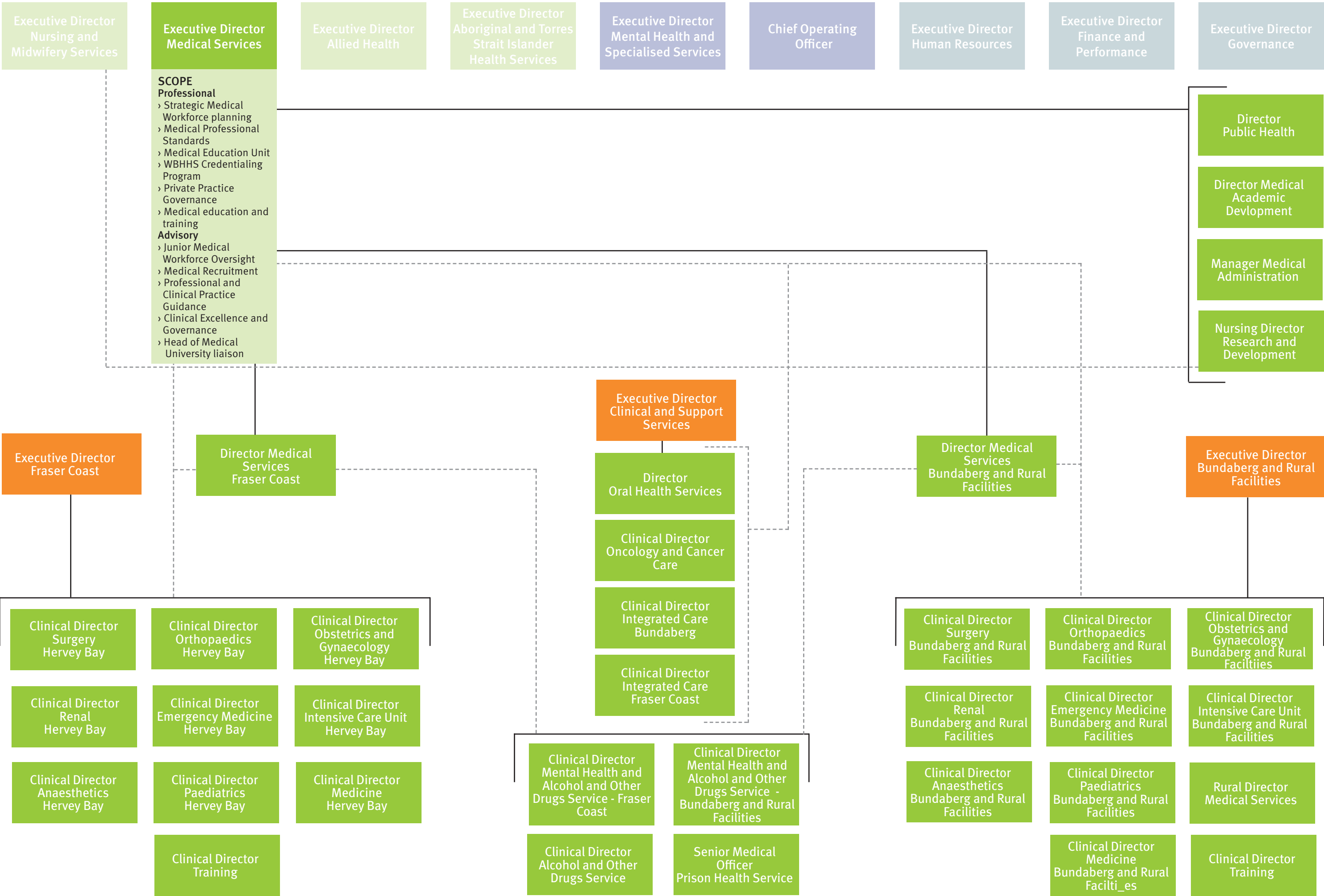
Professional Directorates - Stream Leadership
Executive Directors and other professional leads promote and drive their profession at a strategic level. These roles provide assistance to Managers and Clinicians to promote a culture of high-quality, evidence-based, efficient and safe patient care. Professional leads are also expected to lead sustainability and improvement initiatives.

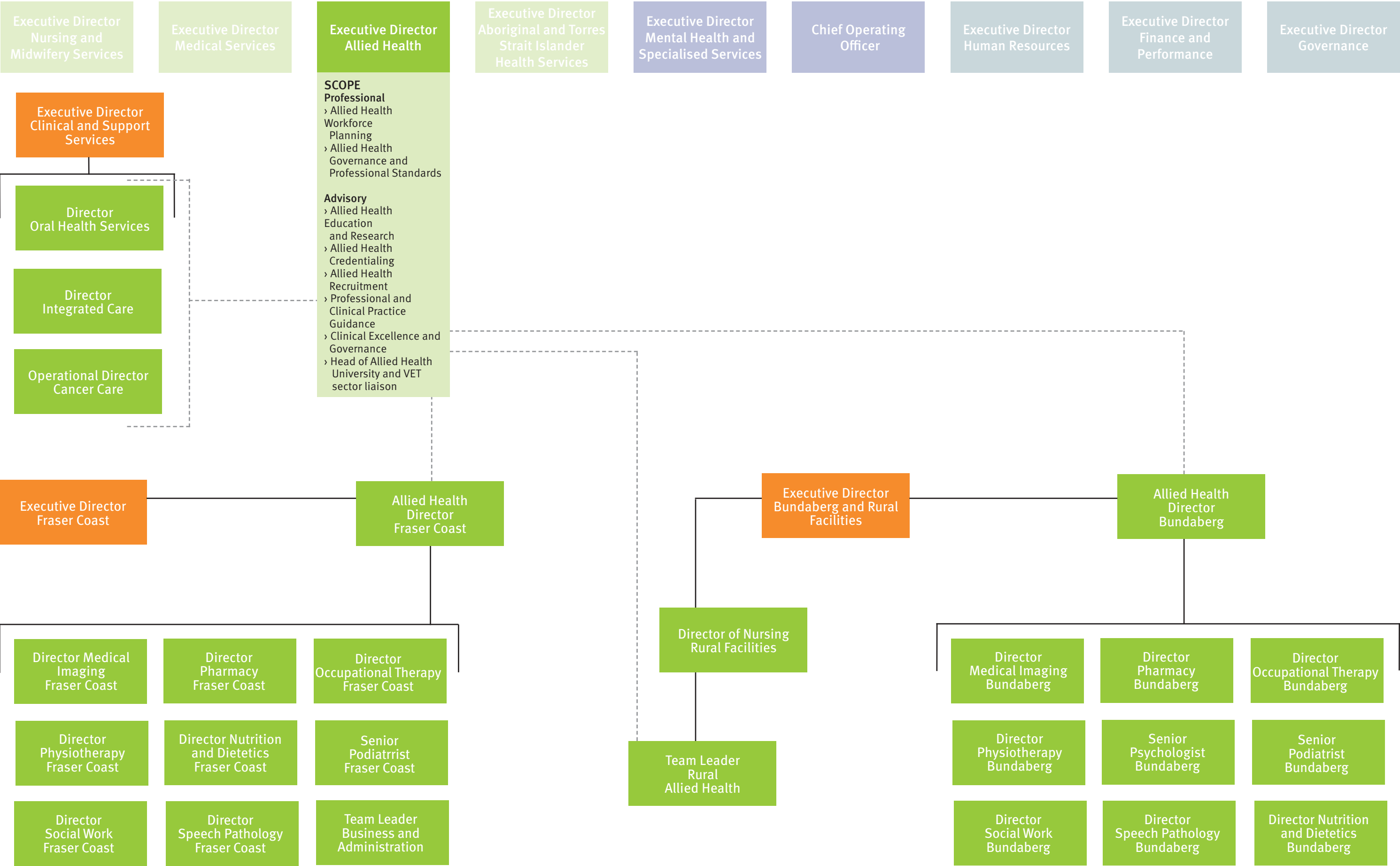
Clinical Service - Operational Leadership
The Executive Directors, Operational Executives and other clinical leads work in a collaborative manner to provide integrated patient care across the continuum and geography of WBHHS. These roles are supported by the Professional and Support Directorates.

Support Directorates - HHS-wide Leadership
The Support Directorates work in collaboration with the Clinical and Professional areas to support the provision of quality care, every day. The Executive Directors and other staff support WBHHS to promote organisational accountability and systems to support HHS decision making. In particular, the Support Directorates and their respective Executive Directors lead a range of governance, finance and HR/IR functions.

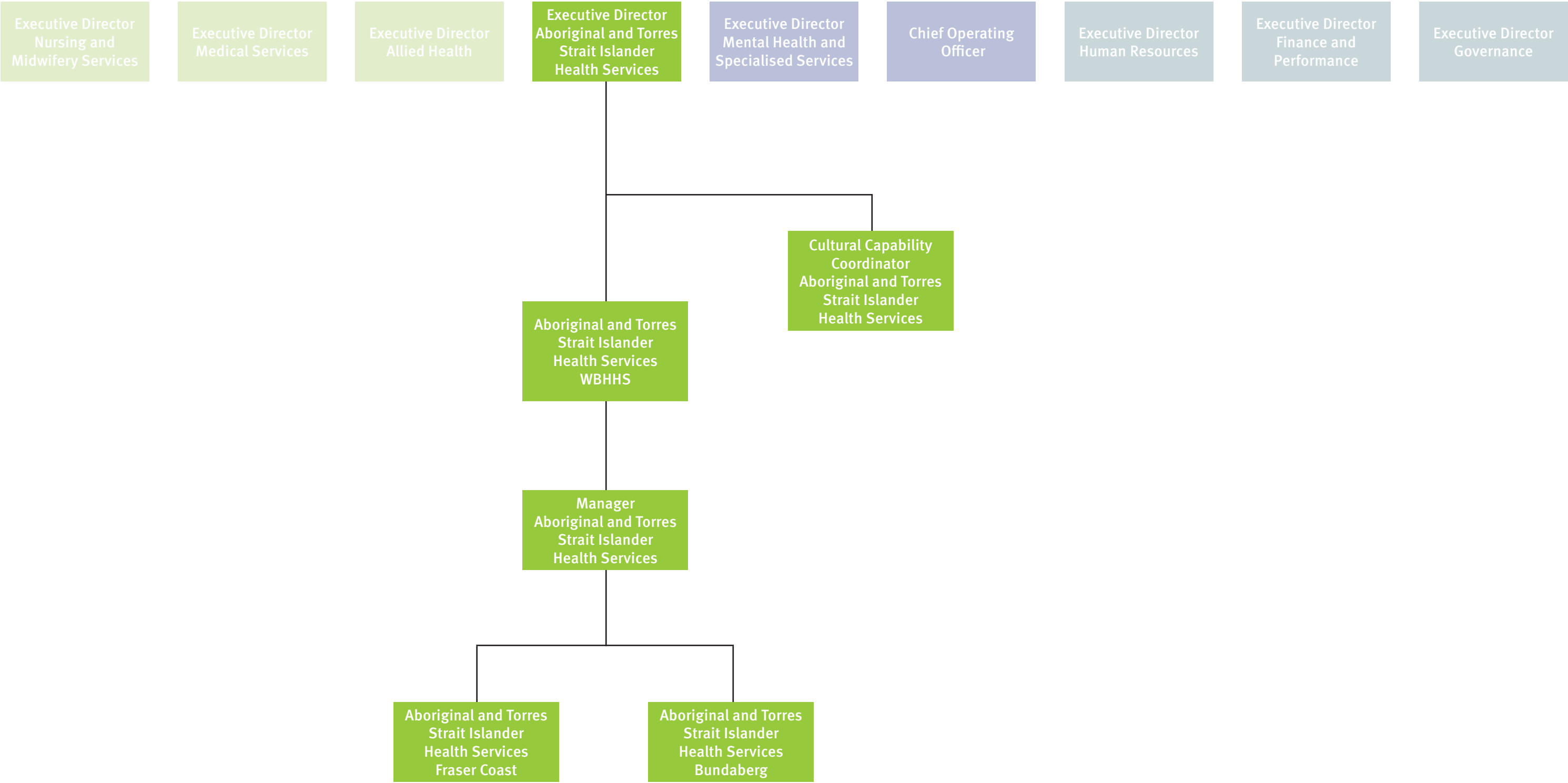


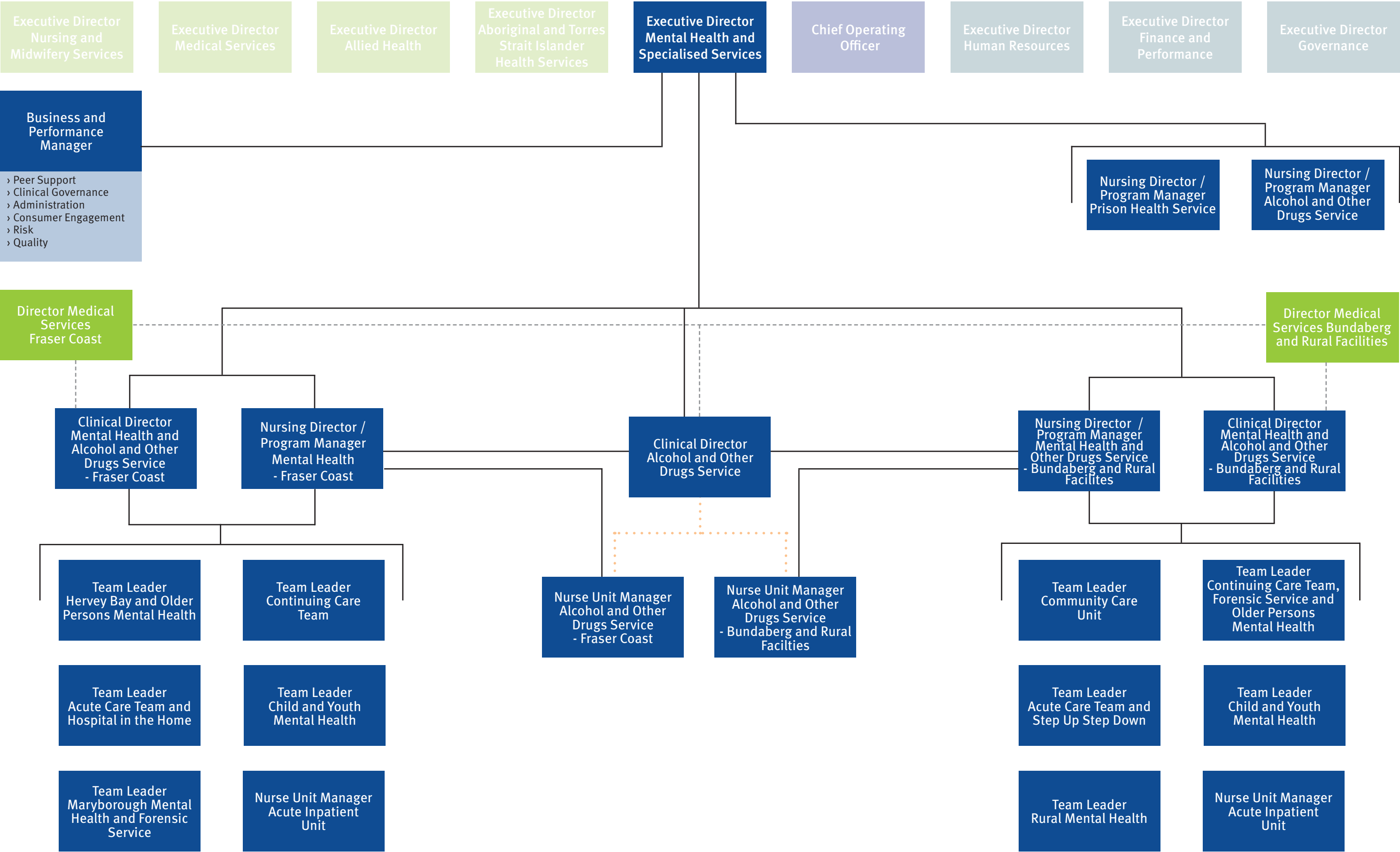
*Note
Staff within the Nursing and Midwifery stream work across Wide Bay Hospital and Health Service in various roles and positions.
The Executive Director Nursing and Midwifery Services provides professional support to staff within the Nursing and Midwifery stream, regardless of their operational reporting line.



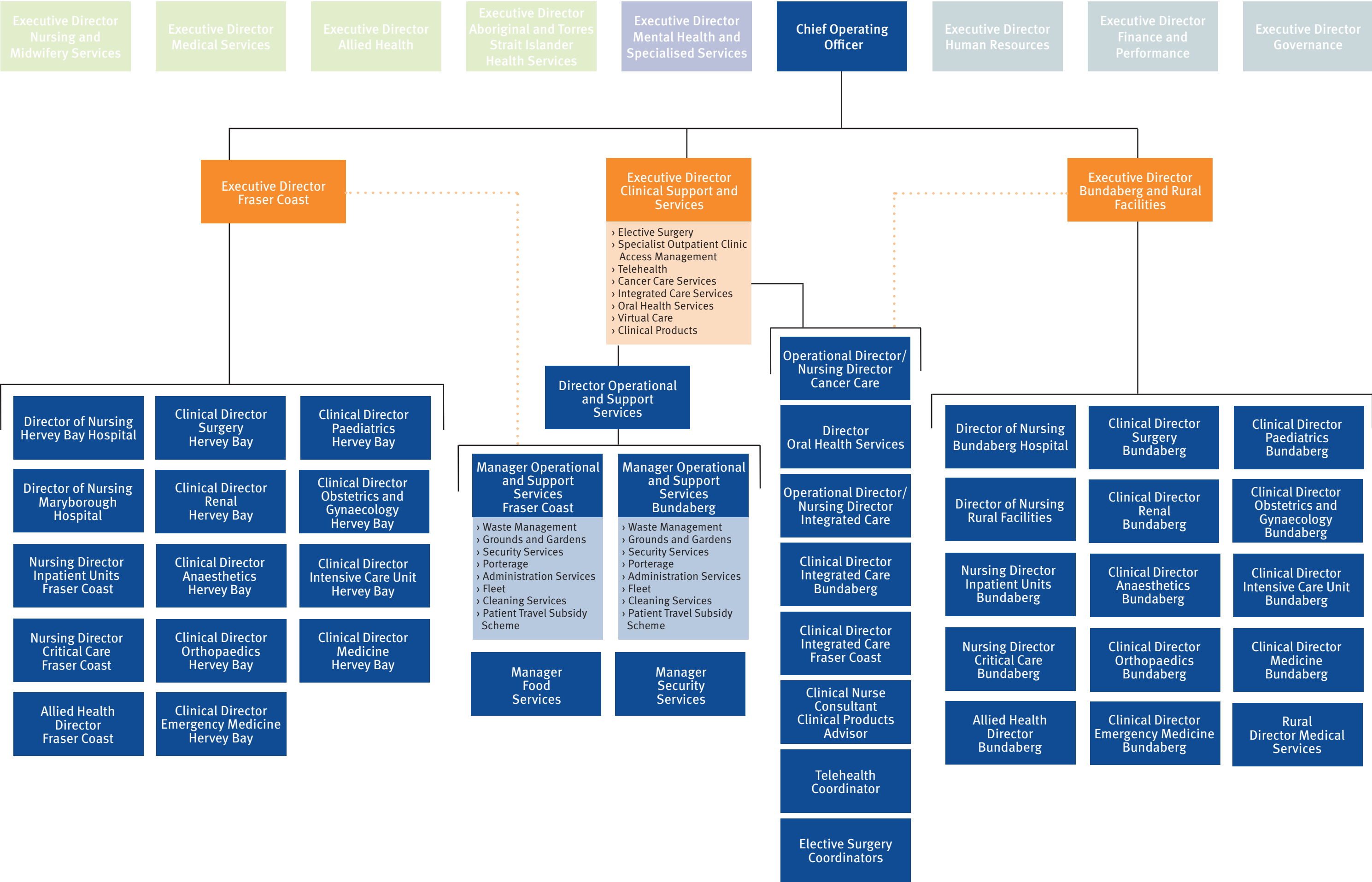


***Note**
Staff within the Allied Health stream work across Wide Bay Hospital and Health Service in various roles and positions.
The Executive Director Allied Health provides professional support to Allied Health staff, regardless of their operational reporting line.





***Note**
Mental Health and Specialised Services is a multidisciplinary stream. As such, the positions of Nursing Director / Program Manager Mental Health and Alcohol and Other Drugs Service, both North and South, and the Nursing Director / Program Manager Alcohol and Other Drugs Service position can be flexibly filled by individuals from either the Nursing or Allied Health disciplines. These positions would then report professionally to the appropriate Executive - either the Executive Director Nursing and Midwifery Services or the Executive Director Allied Health.
The Nurse Unit Manager Alcohol and Other Drugs Service (North or South) positions are line managed by the respective Nursing Director/Program Manager Mental Health (North or South), and also have an operational relationship with the Clinical Director Alcohol and Other Drugs Service.



*Note: The positions of Director Integrated Care and Operational Director Cancer Care can be flexibly filled by individuals from either the Nursing or Allied Health disciplines. These positions would then report professionally to the appropriate Executive - either the Executive Director Nursing and Midwifery Services or the Executive Director Allied Health. The Manager Operational and Support Services positions are line managed by the Director Operational and Support Services, and also have an operational relationship with the Executive Director Facilities positions.

