

New Bundaberg Hospital

PROJECT DELIVERY UPDATE | NOVEMBER 2024

Civil works well underway

Civil works are well underway for your new Bundaberg Hospital.

Erosion and sediment controls are now in place as the delivery of fill to site continues. To date around 15 per cent of the 50,000 cubic metres of fill has arrived on site. This fill will assist in bringing the surface to a suitable level and height for the new hospital buildings.

This will be our last newsletter for 2024. We thank you for your ongoing support and encouragement of the new Bundaberg Hospital project and look forward to keeping you informed on another productive and exciting year ahead.

Wishing you and your family all the best for the festive season. See you in 2025!



General fill to building pad.



Retention basin.

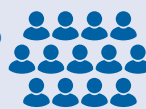
WRAPPING UP 2024



125+ design workshops

150+ local project user group

participants



300 interactions

across 7 pop-up information sessions

5+ expos

promoting careers in health



smoking ceremony



symbolic turning of the sod

bulk 
earthworks

100+ subscriptions

to receive electronic project updates



50+ media articles about the project

› **INSIDE THIS UPDATE**

- › In the spotlight: New spiritual care space
- › Getting to the new hospital
- › Interior design inspiration
- › Meet the project team: Hayley Sainsbury



Scan to view
this newsletter
online!

› IN THE SPOTLIGHT

Each newsletter, we'll be shining a light on a key feature of your new hospital.

New Bundaberg Hospital to provide tranquil spaces for reflection and retreat

Patients, staff, carers, and visitors are set to benefit from a spiritual care area in the new Bundaberg Hospital that will offer a quiet space for retreat, reflection, and religious and spiritual observances.

The spiritual care area will include a multi-faith room and a small ablutions room adjacent, accommodating different rituals, and promoting inclusivity and respect for individual needs.

Hospitals can be a stressful and overwhelming environment for patients and their families. Having a dedicated area in the new hospital recognises the importance of addressing not just physical health, but also emotional, spiritual and social wellbeing.

The new spiritual care space will offer a quiet, reflective and contemplative space where visitors can find solace, pray or engage in their spiritual practices, helping to alleviate anxiety and stress.

Staff also often face emotional and spiritual challenges in their work, so offering an environment away from the hustle and bustle of the hospital to reflect and recharge will enhance their wellbeing.

Wide Bay Hospital and Health Service (WBHHS) Volunteer Services Coordinator Kim Hanns said the spiritual care space would enable



WBHHS to strengthen connections with local faith communities, enhancing the hospital's role in the community and promoting a sense of belonging for patients and their families.

"It has been a privilege to be involved in the design process and I look forward to seeing the design, which incorporates natural light, inviting seating, and soothing décor, coming to life," Kim said.

"Bundaberg Hospital's current chapel/spiritual care room is quite dated and located away from the main hospital building, making it sometimes difficult to find or access, so we're really excited for what's ahead."

WBHHS Volunteer Spiritual Care Coordinator Trish Byrne said the spiritual care area will be there for all people—of any or no religious tradition—providing a quiet restful space for tired spirits or those wanting a quiet moment of prayer.

"When challenged by life, a few moments of quiet time may help our spirits remember the things that nurture and strengthen us," Trish said.

"The community will also benefit from the safe listening presence of a hospital chaplain who will be based near the spiritual care room."

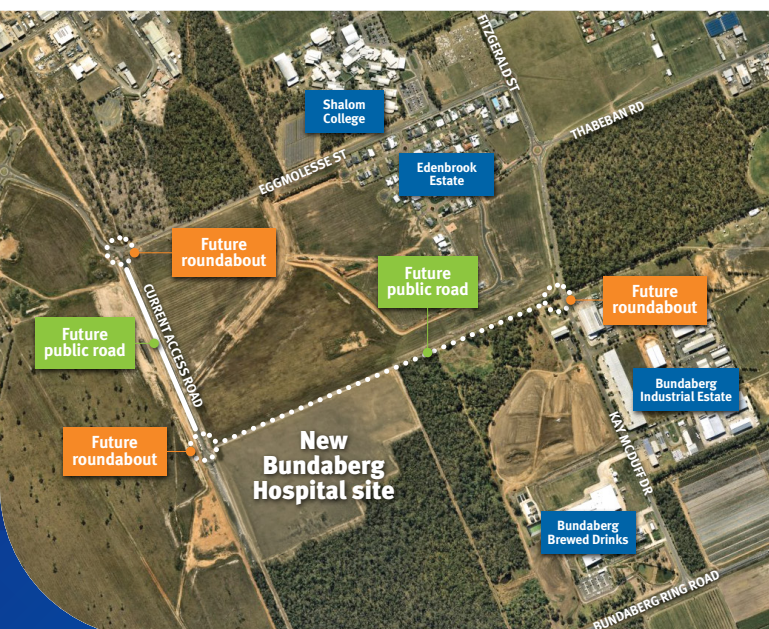
Getting to the new hospital

Future public access to the new hospital will be via two new local government roads.

A roundabout will be built at the Johanna Boulevard and Eggmolese Street intersection. The service road will be upgraded prior to the new hospital opening.

A new road will also be built from Kay McDuff Drive, near the Bundaberg Clay Target Club entrance, west to the hospital site. This includes the construction of roundabouts at either end as illustrated in the map.

The new east-west connection also includes the bus set down and pick up facilities on either side of the road near the new hospital's main entrance.





Local environment inspires earthy colour palette

Designers Hayley and Chelsea were recently in Bundaberg to share an update with key staff on the proposed interior finishes and earthy colour palette for the new hospital.

The interior design strategy aims to promote a welcoming, comforting and respectful environment, which incorporates considered space planning, interior elements and culturally appropriate public art.

Through the use of scale, materiality and tactility, interior elements aim to promote interest and 'memorable moments' and most importantly

provide a connection to place within the city of Bundaberg and its surrounding areas.

Inspired by the character themes of Water, Geology and Land, the design team has curated a neutral, warm and timeless base scheme, with highlight palettes inspired by our surrounding natural beauty and environment, along with those connections to the land that have been passed down for generations.

The community has told us over the years that they wanted a new hospital that reflected the local environment - they wanted the new hospital to be warm and welcoming with a strong connection to country.

The early palette combined with access to natural light will help to reduce stress, anxiety and support the emotional and physical wellbeing of patients, along with improve the employee experience.

Below: WBHHS staff and WBHHS Consumer Reference Group members at Gin Gin and Mount Perry share their thoughts on colours and materials.



MEET THE PROJECT TEAM

Each newsletter, we'll be introducing members of the project team.

This newsletter, we're featuring
Hayley Sainsbury

**Project Director/Principal,
Billard Leece Partnership**



Hayley's personal connection and familiarity of Bundaberg has ensured the interior/exterior design approach for the new hospital honours our local area, which is rich of history and culture, natural attractions, abundant farmlands, pristine waterways and an idyllic coastline.

"I was born at the old Lady Chelmsford Hospital and completed my entire school education in Bundaberg before relocating to Brisbane to study a Bachelor of Built Environment - Interior design at the Queensland University of Technology," Hayley said.

"It's very special being able to return home with 20+ years of experience to lead the design development for a new hospital that will mean so much to the local community, including many of my own family who still reside here.

“It's been such a privilege to draw firsthand knowledge of the area and engage with local stakeholders to steer the design narrative and develop the proposed colour palette and materials.”

"I also enjoy bringing insight and experience from other projects and sectors in the design of healthcare, advocating the importance of creating healthy environments for the wellbeing of all occupants.

"Hospitals are not only a place for specialised patient treatment and care, but a large workplace for dedicated healthcare workers including nurses, doctors, allied health professionals and other support staff."

Throughout her career, Hayley has led interior design and internal fit-out strategies from concept design to completion on many large projects across the state and New South Wales NSW, with a strong focus on health infrastructure projects in the past decade.

"As Project Director on this project, my role involves overseeing a team of up to 30 people – a specialised mix of architects, planners and designers – to ensure a balanced and considered approach to planning and design for the new hospital," she said.

"With end users in mind, we work in close collaboration with a range of design consultants, the builder and other important project stakeholders, including locals, to bring the collective vision to life.

"With the design process soon wrapping up, the next milestone that I'm looking forward to is the first concrete pour!"

When asked how she keeps healthy in her spare time, Hayley said she's a regular parkrunner, spruiking the Elliott Heads Beach parkrun as one of the most scenic parkrun locations in Australia.



For more information about the project and to sign up to get the latest news, announcements and project updates delivered straight to your inbox, visit:

widebay.health.qld.gov.au/new-bundaberg-hospital

07 4303 8540 wbhhs-newhospital@health.qld.gov.au

Wide Bay
Hospital and
Health Service

